

OUR INITIATIVE FOR THE IDENTIFICATION OF COVID-19 SENSITIVE POPULATIONS IN CITIES ACROSS THE WORLD

WHY?

During this unprecedented and uncertain time, we have developed maps that identify areas with high concentrations of the most vulnerable residents to COVID-19: elderly, minority groups, etc. We are sharing these maps so that cities can better protect them with health care. By processing demographic data onto maps, we empower decision-makers to identify, inform, and protect the vulnerable groups more effectively.

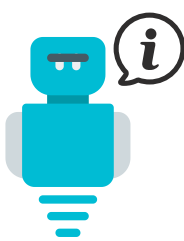
WHERE?



HOW CAN CITIES USE THE MAP?

Once the high-risk COVID-19 residents have been located, the city authorities can proceed to implement smart initiatives to provide valuable information to protect them.

Inform



Corona-bots

Cities can set up AI powered platforms, or robots, that can answer questions regarding labour laws, lockdown restrictions, prevention, travel, traffic and more. They can also be used to combat the spread of disinformation about the virus.



How far is the closer hospital?

A measuring tool is integrated in our interactive maps to measure the distance from the closest health care or supply center.

Protect

Our COVID-19 Sensitivity Map is designed to located the vulnerable people in the city and their proximity to health care and emergency services. Cities can understand where they can set up new emergency centers to prevent vulnerable people to move long distances to reach them, thereby, reducing mobility and the potential spread of infection.

